

# TARANG

*A wave of life*



shristinagar  
Asansol

Launching



Designed for luxury living



A photograph of a modern, multi-story apartment building with a facade of grey and brown tones. The building features numerous windows and balconies. In the foreground, there is a well-maintained garden with various green plants, including tall grasses, shrubs, and trees. A paved walkway with a red brick pattern is visible on the right. A modern street lamp with three spherical glass globes stands on the left. The sky is clear and blue.

Exquisite design.  
Extraordinary living.



Tarang Tower 8 boasts of exquisite design, expert craftsmanship and magnificent finishes which seamlessly blend with contemporary living spaces amidst refreshing green views. Spread across 12 floors, Tarang offers an array of 2 & 3 bedroom apartments crafted with pure elegance.

Located at Shristinagar Asansol, the new tower embraces the security and convenience of the 90-acre integrated township along with exclusive premium amenities from landscaped garden, nature trails, community hall, indoor games, and multi-purpose court on terrace.

Luxury living, contemporary spaces and refreshing nature views – all come together at Shristinagar-Asansol -- a secured gated township, first-of-its-kind in Eastern India. The 90-acre integrated township, designed to accommodate about 5000 families, features a choice of residential options in a neatly laid out green complex. The township comes with a world of amenities for its residents - leisure club, shopping mall with multiplex, multi-specialty hospital, offices, five star hotel, and a school. Amidst Shristinagar's green expanse, you don't just buy a home, you buy an entire township!





Elevated luxury with  
unmatched elegance

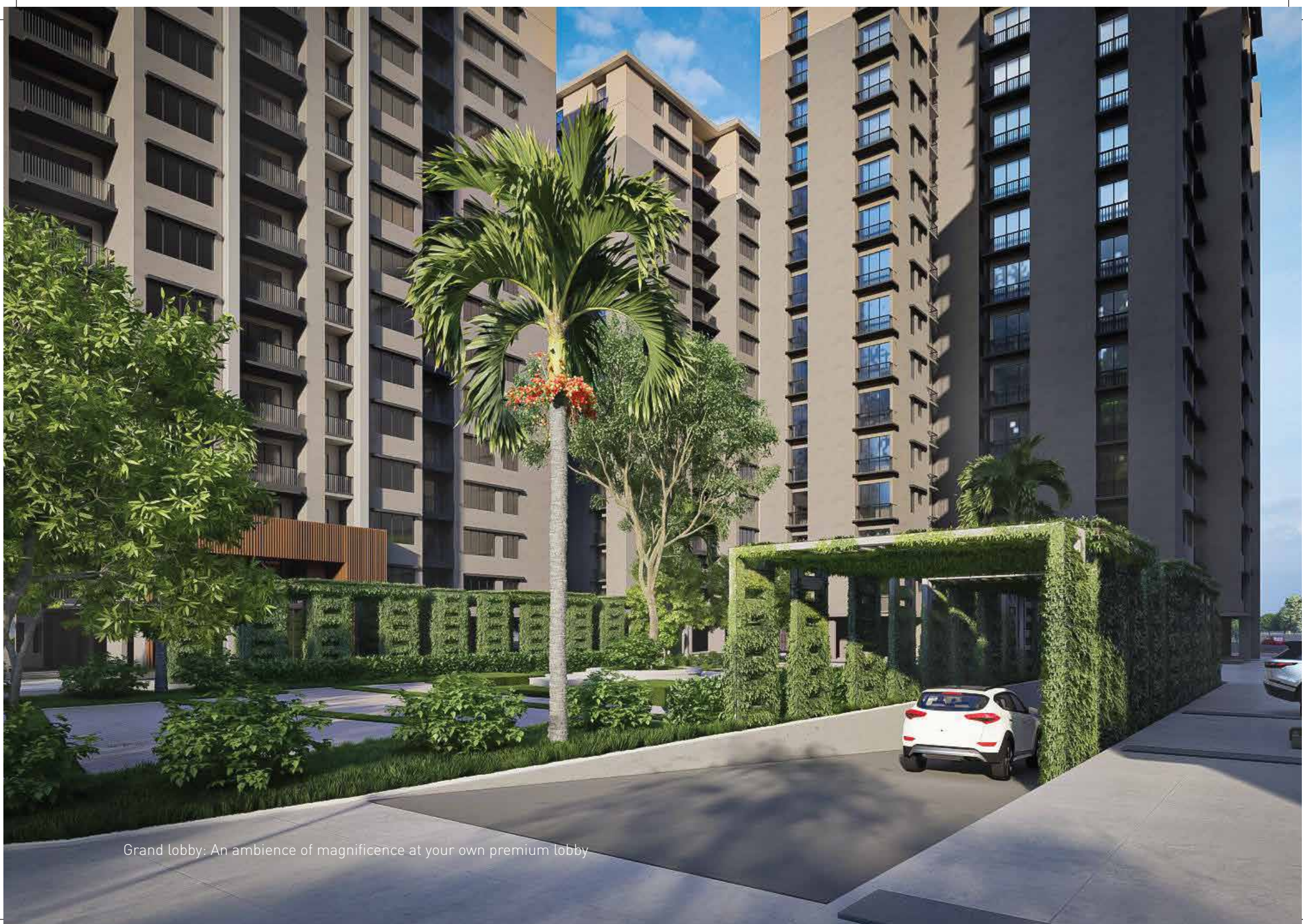
The new Tarang Tower stands majestically amidst expansive views of the township. Discover absolute rejuvenation while you experience the assurance of quality and luxury at every step.



Redefining contemporary style with limited edition view



Sprawling green complements the stunning design



Grand lobby: An ambience of magnificence at your own premium lobby





Balcony: Striking design that lets you flaunt your home



Nature trail: Where harmony and grandeur envelops you at every step

**Multipurpose court  
on terrace**

Aesthetically designed  
court for sports and  
recreation



# Site Plan

Tarang Tower-8 Site Plan



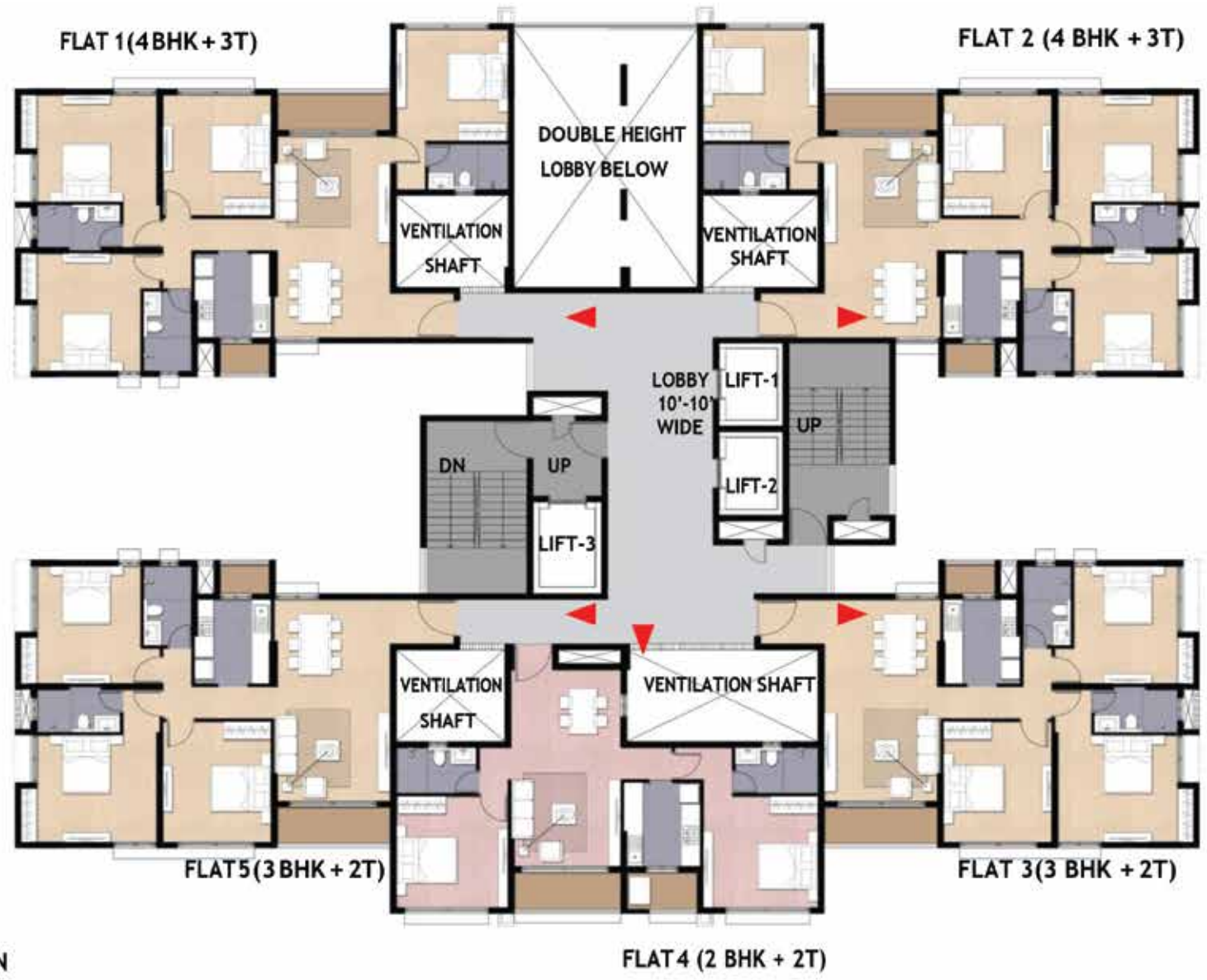
# Master Plan

1. GATE -1
2. AHIRI
3. POORVI
4. TRIVENI
5. SAVERI
6. SRI HARI GLOBAL SCHOOL
7. GATE -2
8. SENTRUM BLOCK-A
9. SENTRUM BLOCK-B
10. SENTRUM BLOCK-C
11. HOTEL
12. CLUB HOUSE
13. TOWNHOUSE
14. UPAVAN
15. FUTURE RESIDENTIAL
16. TARANG-PHASE 3
17. TARANG PHASE-2 (T-8 TO T-13)
18. TARANG PHASE-1)
19. SANGATI
20. LAND FOR FUTURE USE
21. GATE -3
22. CANAL



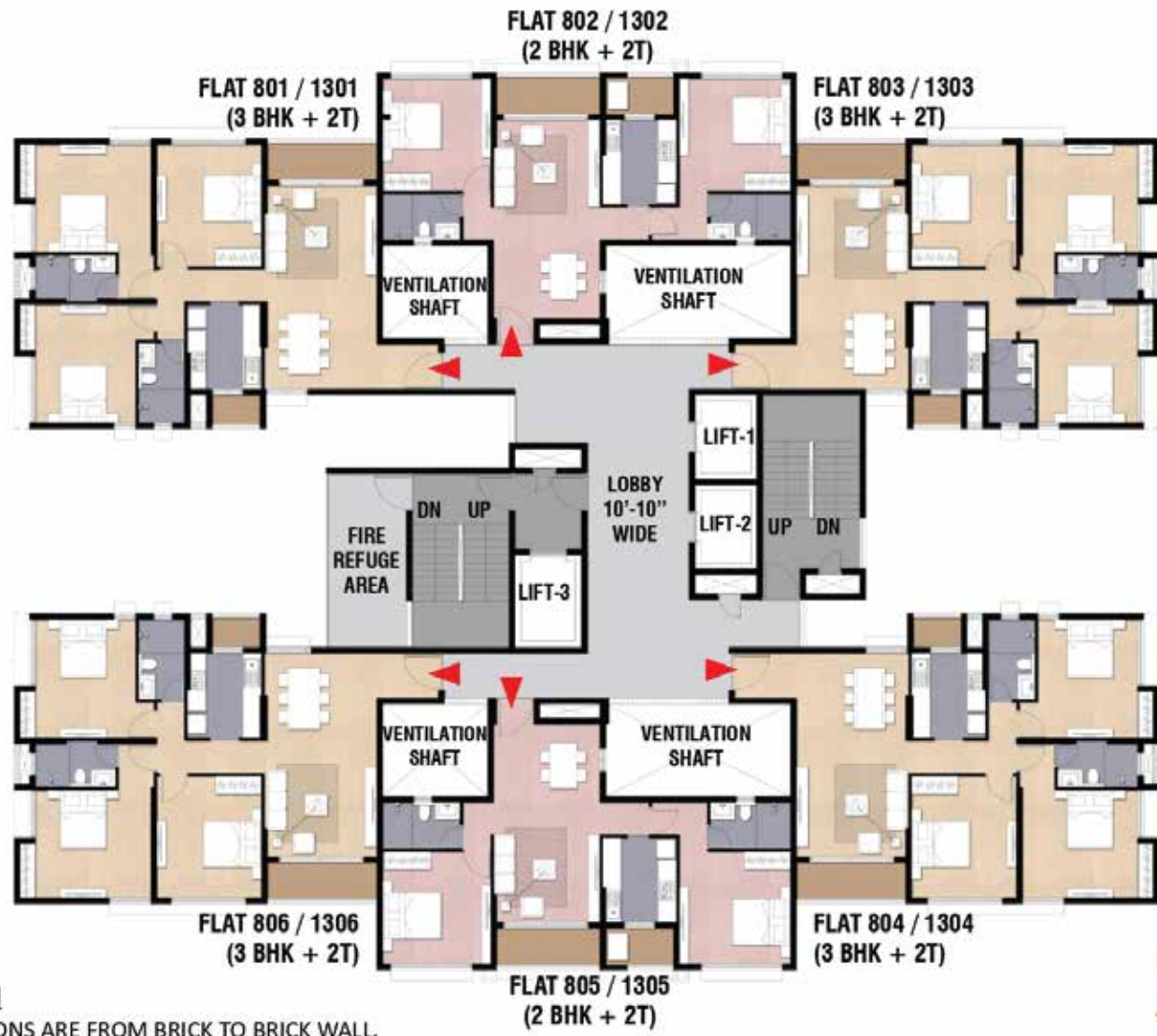
# Floor Plans





1<sup>ST</sup> FLOOR PLAN





**8<sup>TH</sup> & 13<sup>TH</sup> REFUGE FLOOR PLAN**

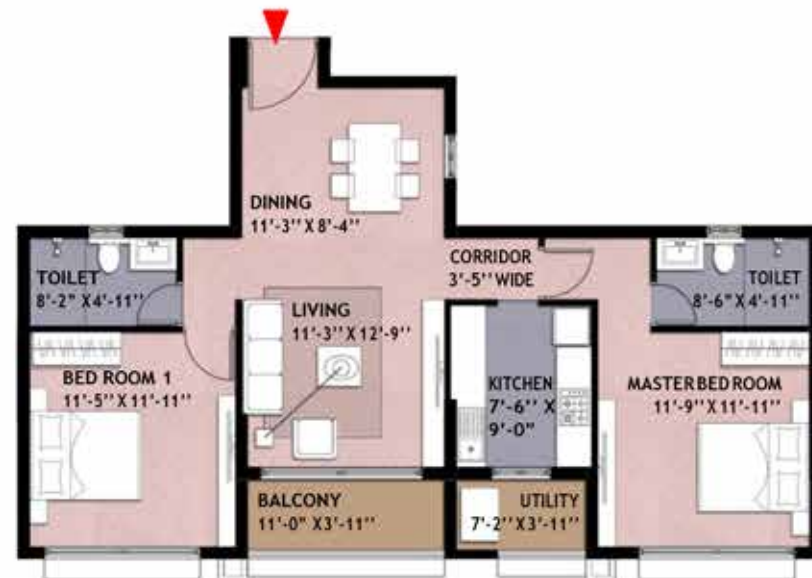
**NOTE - ALL INTERNAL DIMENSIONS ARE FROM BRICK TO BRICK WALL.**

**- THE POSITION AND LEVELS OF THE FIRE REFUGE PLATFORM WILL BE AS PER THE FSR OBTAINED FROM WBF&ES.**





**Flat No 5**  
**SUPER BUILT UP AREA = 1564 SQ.FT**



**Flat No 4**  
**SUPER BUILT UP AREA = 1247 SQ.FT**

1<sup>ST</sup> FLOOR PLAN (3 & 2 BHK UNIT)







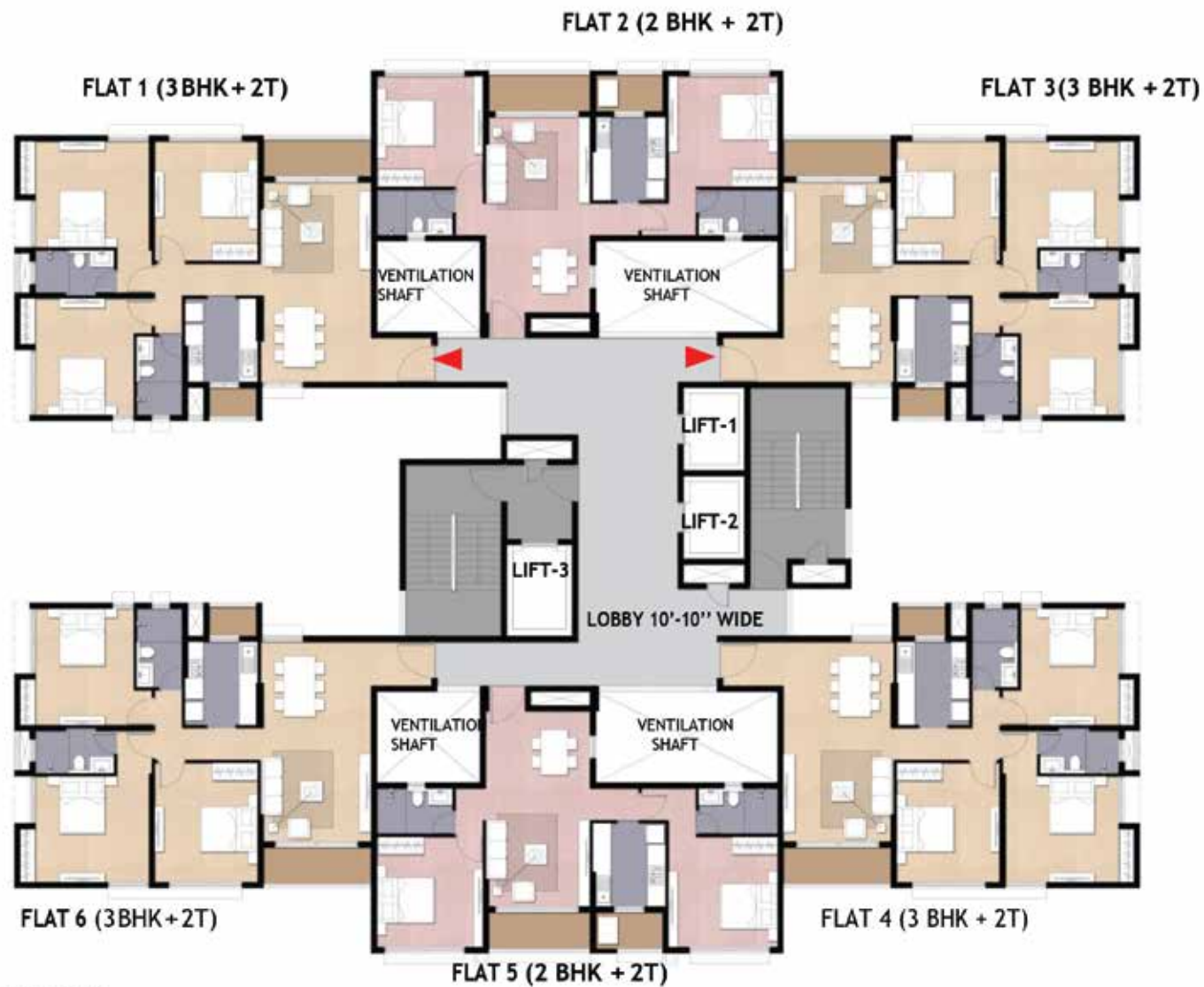
**Flat No 1**  
**SUPER BUILT UP AREA = 1874 SQ.FT**



**Flat No 2**  
**SUPER BUILT UP AREA = 1882 SQ.FT**

**1<sup>ST</sup> FLOOR PLAN (4 BHK UNIT)**





2<sup>ND</sup> to 14<sup>TH</sup> FLOOR PLAN





**Flat No 1, 3, 4 & 6**

**SUPER BUILT UP AREA = 1542 SQ.FT**

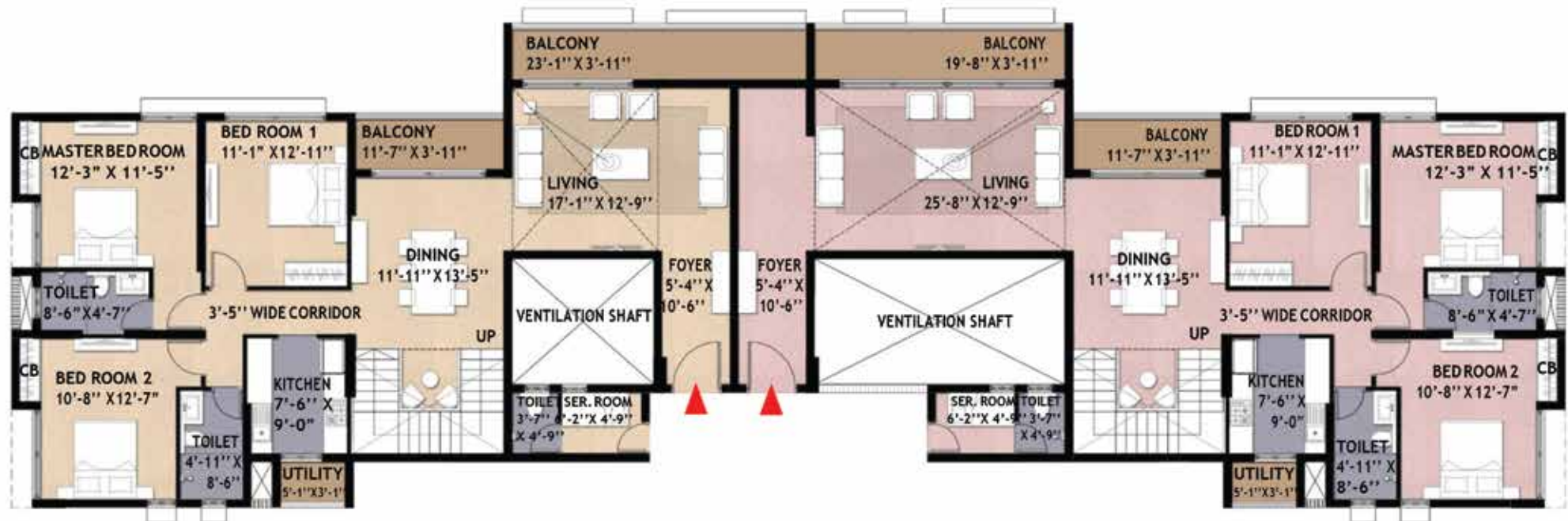


**Flat No 2 & 5**

**SUPER BUILT UP AREA = 1229 SQ.FT**

**2<sup>ND</sup>- 14<sup>TH</sup> TYPICAL FLOOR PLAN (3 & 2 BHK UNIT)**



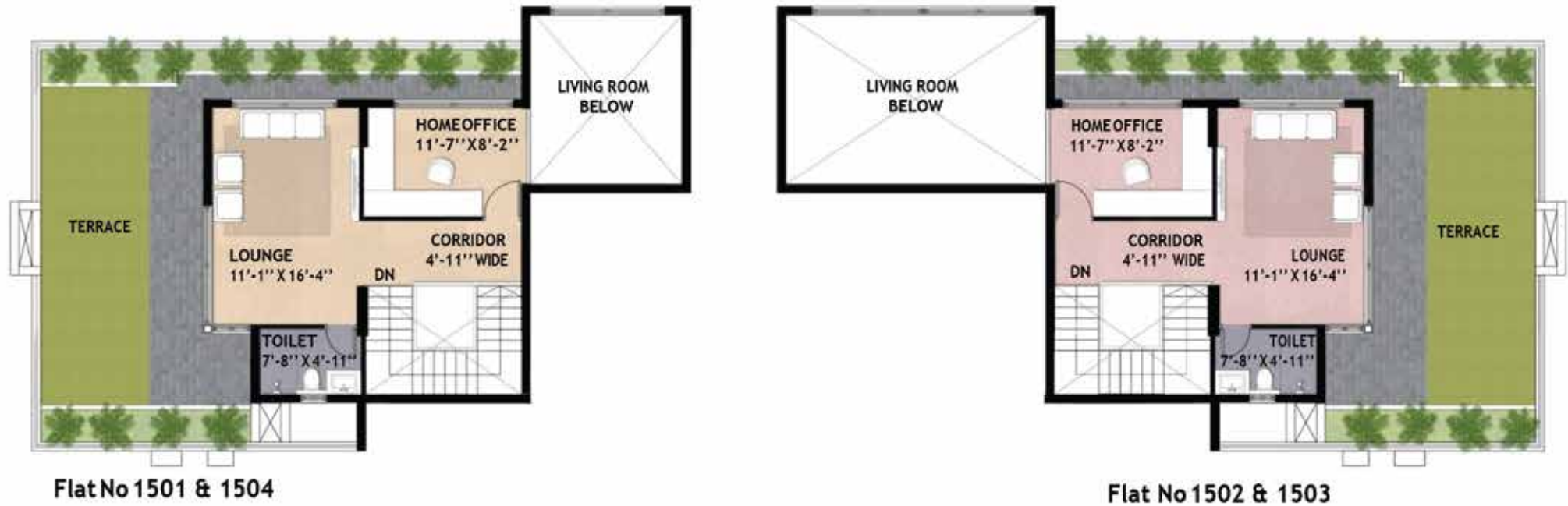


**Flat No 1501 & 1504**  
**SUPER BUILT UP AREA = 3005 SQ.FT**

**Flat No 1502 & 1503 SUPER BUILT**  
**UP AREA = 3140SQ.FT**

**15TH FLOOR PENTHOUSE PLAN -(LOWER LEVEL)**  
**(3.5 BHK (+SR) UNIT)**





**16TH FLOOR PENTHOUSE TERRACE PLAN -(UPPER LEVEL)**  
**(3.5 BHK (+SR) UNIT)**



## Township Features



Gated Enclave



Central Park



Shopping Mall



Odyssey Club



Sentrum Offices



Srihari Global School



Multispecialty Hospital



Upcoming Hotel



### **Bengal Shristi Infrastructure Development Ltd.**

(A joint venture between Asansol Durgapur Development Authority & Shristi)

#### Corporate Office:

Plot No. X 1, 2 & 3, Block EP, Sector V, Salt Lake City,  
Kolkata - 700 091, Tel: +91 33 4020 2020, Fax: +91 33 4020 2099  
E-mail: [contact@shristicorp.com](mailto:contact@shristicorp.com)

Website: [www.bengalshristi.com](http://www.bengalshristi.com)

#### Asansol Office:

101 & 102, 1st Floor, Sentrum Office Block,  
Shristinagar, Sen Raleigh Road,  
Asansol - 713305

Mobile: 99038 33888