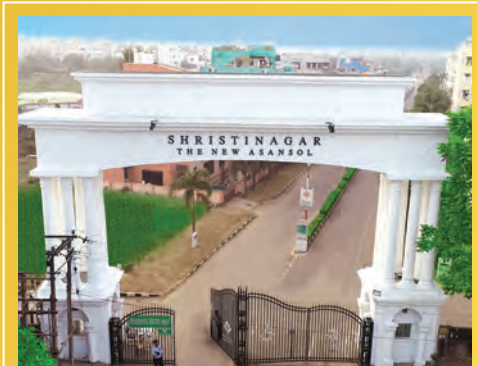


Township Features



Gated Enclave



Central Park



Sentrum Mall



Odyssey Club



Sentrum Offices



Srihari Global School



Healthworld Hospital



Upcoming Hotel



**BENGAL
SHRISTI**

Bengal Shristi Infrastructure Development Limited.

(A joint venture between Asansol Durgapur Development Authority & Shristi)

Corporate Office:

Plot No. X 1, 2 & 3, Block EP, Sector V, Salt Lake City,
Kolkata - 700 091, Tel: +91 33 4020 2020, Fax: +91 33 4020 2099
E-mail: contact@shristicorp.com

Website: www.bengalshristi.com

Asansol Office:

Sentrum Mall, 3rd Floor,
Shristinagar Road,
Asansol - 713305

Mobile: 99038 33888



shristinagar
Asansol

TARANG

A wave of life

Designed for

luxury living



On top
of the world
Luxe Living

Luxury living, contemporary spaces and refreshing nature views – all come together at Shristinagar Asansol -- a secured gated township, first-of-its-kind in Eastern India. The 90-acre integrated township, comes with a world of amenities for its residents - leisure club shopping mall with multiplex, multispecialty hospital, offices, hotel, and a school. Amidst Shristinagar's green expanse having 65% open space, you don't just buy a home, you buy an entire township!



Site Plan

Specifications

Structure

Earthquake resistant R.C.C framed construction

Walls

External walls 200 mm AAC Blocks. Internal walls 100 mm AAC Blocks

Wall finishing

1 coat of primer on POP /putty over the plastered surface
2 coats of acrylic plastic paint over a coat of primer over POP surface
Paintings - 2 coats of weathershield paint over cement Primer

Internal

Vitrified tiles

Corridor, Lobby

Vitrified tiles

External

Finishes

Living & Dining Room

Anti skid ceramic tiles
Glazed ceramic tiles upto 2ft height above kitchen counter
Granite of required shade
Stainless sink with drain board

Bedrooms

Anti skid ceramic tiles
Ceramic tiles upto lintel level on all sides
European type- white

Kitchen

Master Toilet - Wall hung

Floor

Other Toilets - Floor mounted

Dado

Ceramic with bottle trap

Counter

Master Toilet- Above counter basin

Sink

Other Toilets- Below counter basin

Toilet

C.P.

Floor

Provision of geyser point (without geyser) in all the toilets

Dado

Provision of hot & cold water mixer arrangement in shower and washbasin

WC

Modular doors/ panelled main entrance door, others primer finished flush doors

Powder coated/Color Anodised matt finish aluminium sliding/ casement window

MS railings

Concealed wiring with PVC conduits and modular switches of reputed brand. AC Point in all bedrooms, living rooms. Provision of Wifi connection at Living room and TV connections in Living & Master bedrooms

COMMON AREAS

Vitrified Tiles/ Marble

Lobby

Kota/ Cement / Tiles

Staircase

Vitrified Tiles

Corridors

Ceramic tiles

Services, Servant's room & Toilet

Cement Finish

Basement & stilt floor car parking

3 Automatic Lifts of reputed brand in all the buildings

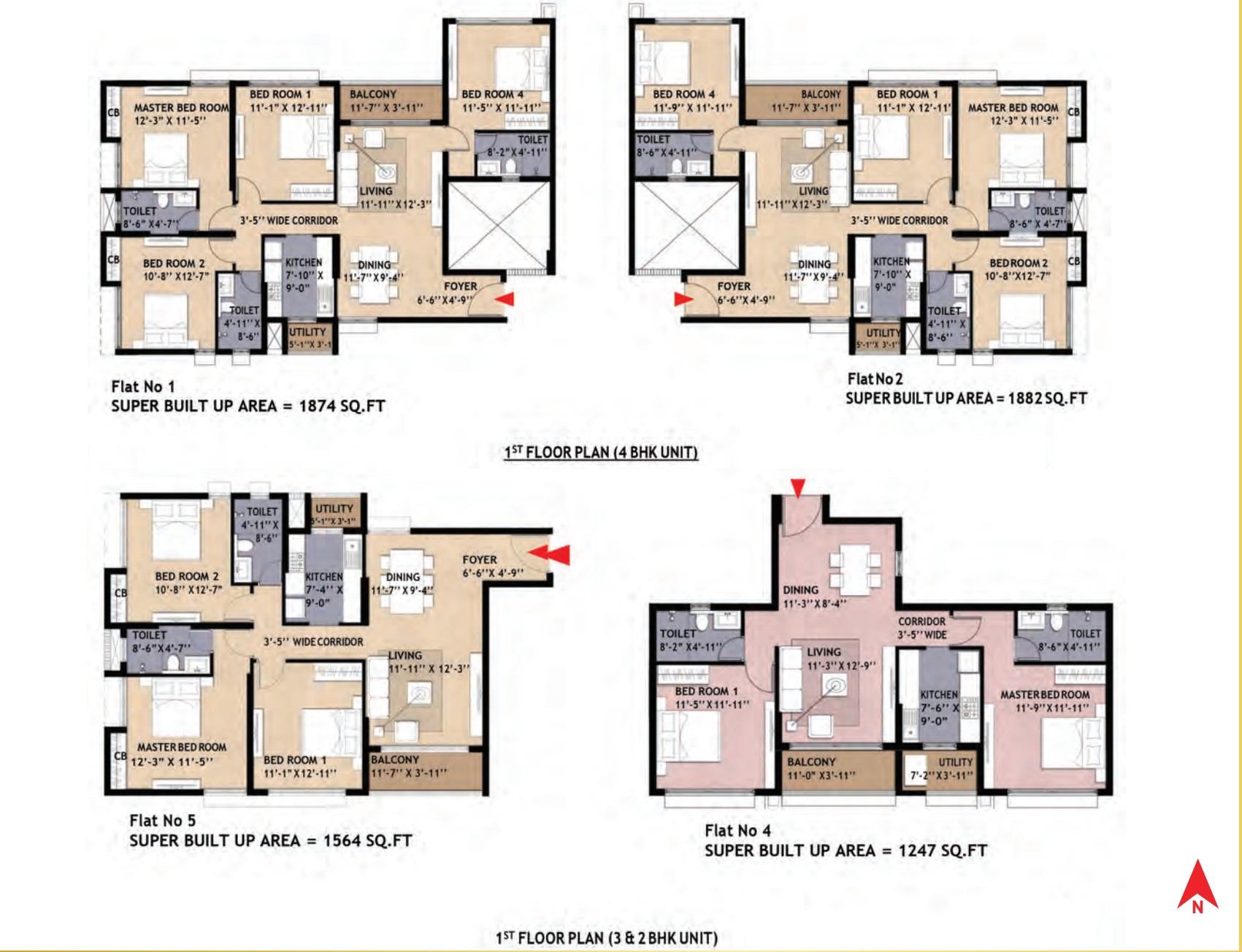
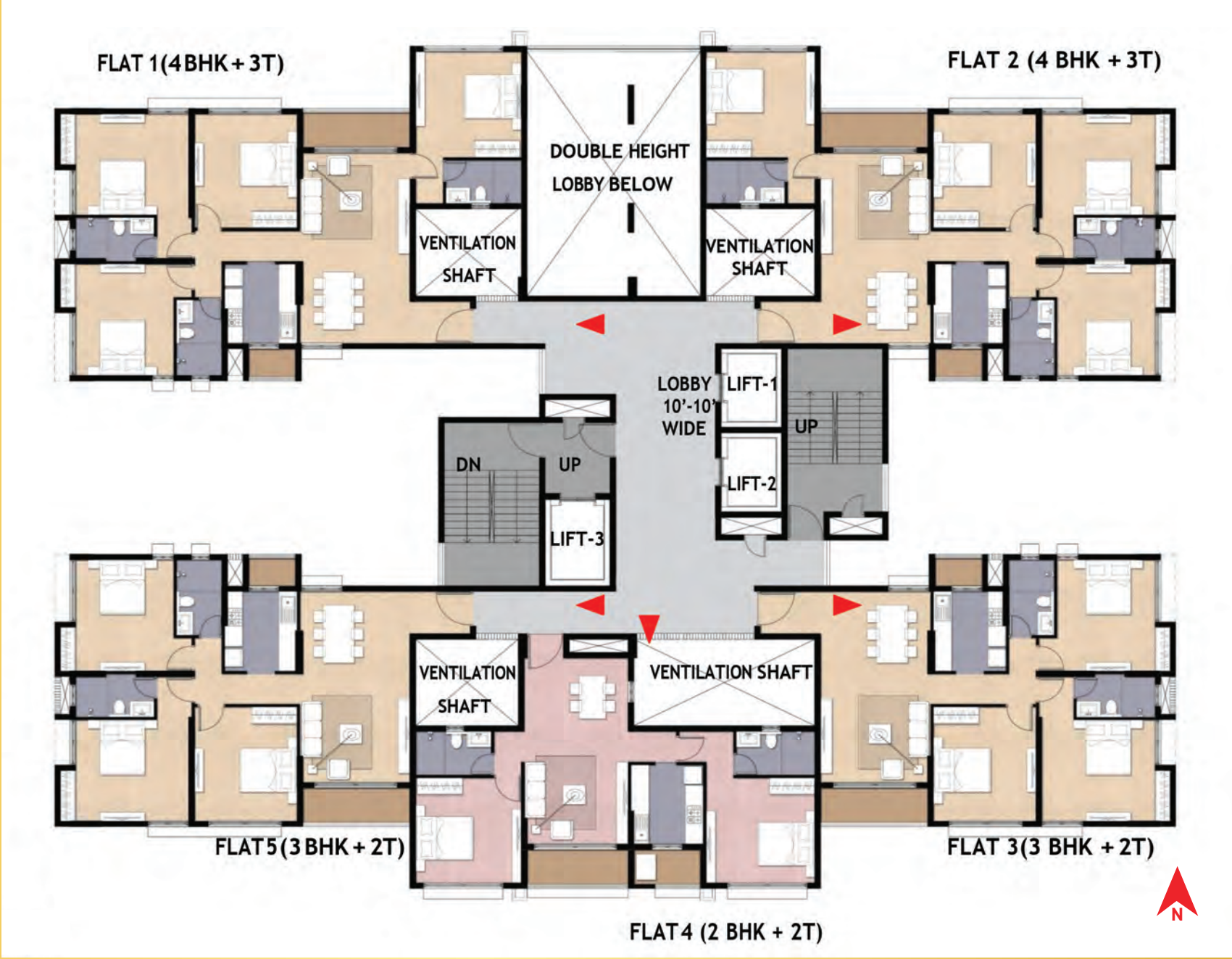
Lift

(Disclaimer: Tarang 9's lift and shaft orientation are opposite to Tarang 8's.)



Floor Plans

1st Floor Plans



2nd to 14th Floor Plans



8th to 13th Refuge Floor Plans

